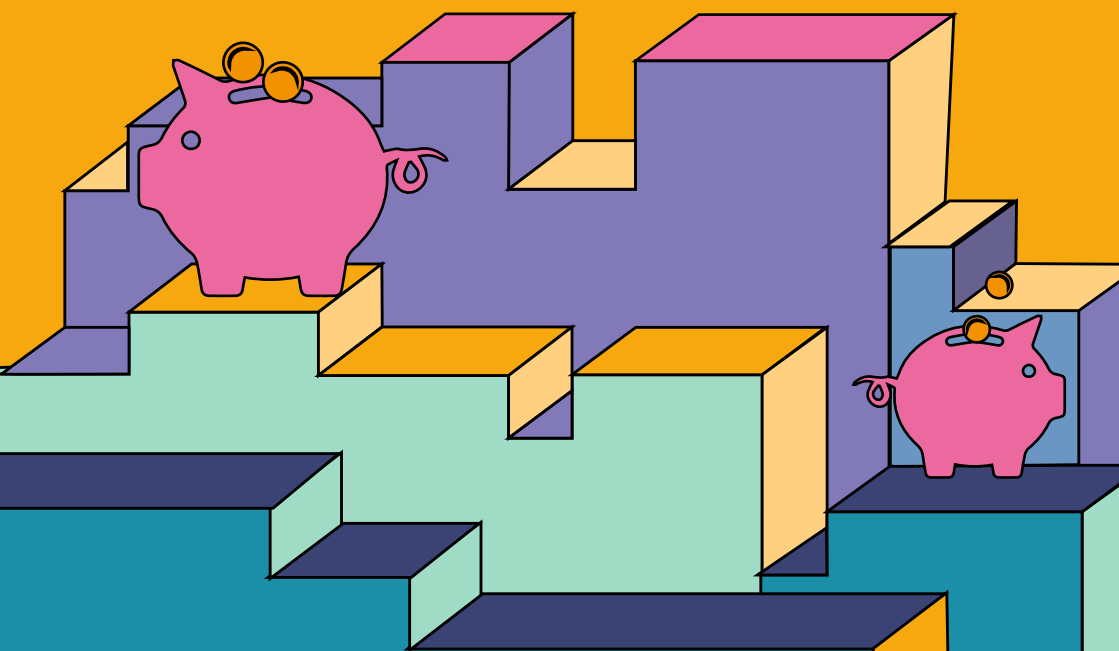


THE PIGGY BANK

SUPPORT FOR STUDENTS

www.thepiggybank.org.uk



Supported by



BIG
LOTTERY
FUND

LOTTERY FUNDED

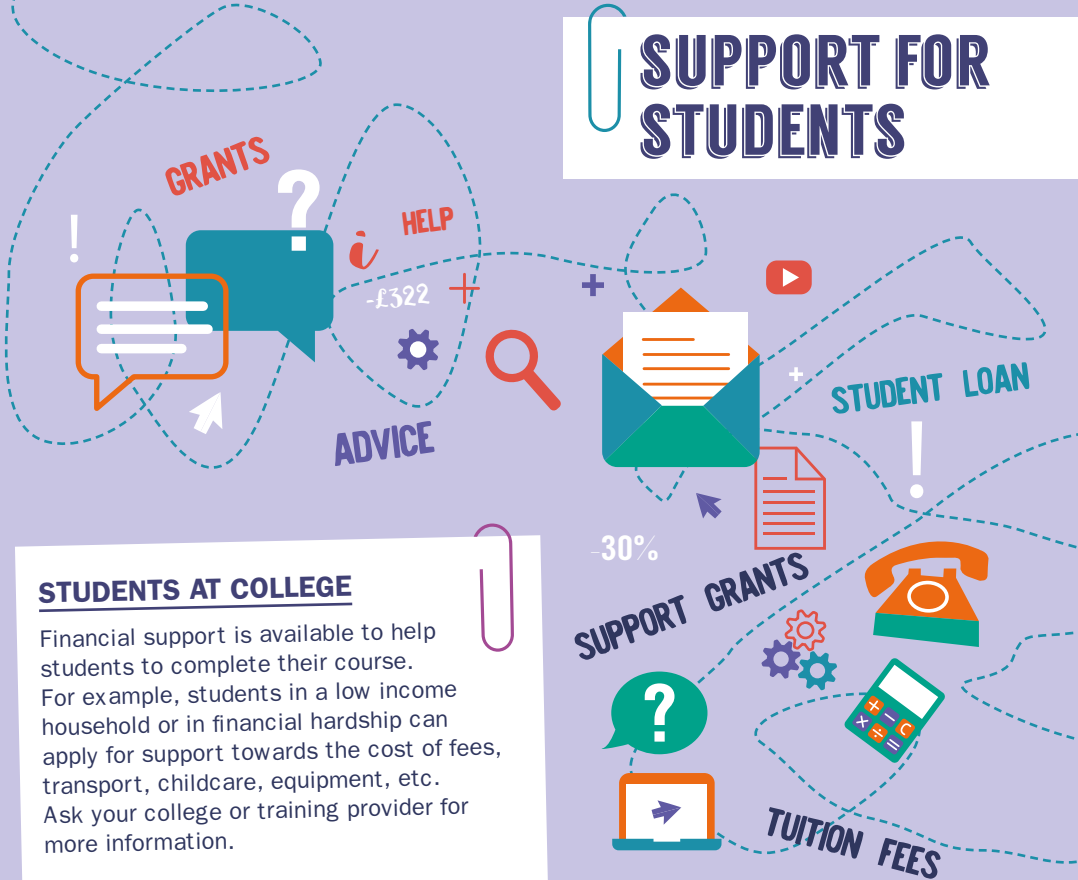
citizens
advice

South Lakes



Kendal College
creating bright futures

SUPPORT FOR STUDENTS



STUDENTS AT COLLEGE

Financial support is available to help students to complete their course. For example, students in a low income household or in financial hardship can apply for support towards the cost of fees, transport, childcare, equipment, etc. Ask your college or training provider for more information.

STUDENTS GOING ONTO UNIVERSITY (CHANGES TO STUDENT FINANCE)

Full-time students who start their course on or after 1 August 2016 will no longer be able to apply for grants to help with their living costs; instead they can get a higher rate of Maintenance Loan.

Here is a summary of the changes:

- **Maintenance Grants and Special Support Grants** have been replaced by Maintenance Loans.
- From 2016/17 new full-time students will be able to apply for a higher rate of **Maintenance Loan**.
- The maximum tuition fees and maximum **Tuition Fee Loans** will remain the same.
- There are no changes to the amount of extra help a student with a disability or a student with children or adult dependants can get.
- Household income thresholds will remain the same.

For more information see:
www.gov.uk/student-finance

www.thepiggybank.org.uk

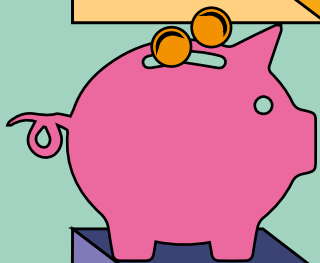


LOTTERY FUNDED



citizens
advice

South Lakes



Kendal College
creating bright futures

Kendal College has published all information in good faith. Whilst every effort to ensure that the information in this guide was correct at the time of going to print, Kendal College reserves the right to amend information at any time. Printed March 2016.